

**J-KEM Scientific, Inc.**  
*Instruments for Science from Scientists*

**J-KEM® Scientific, Inc.**  
858 Hodiament Ave.  
St. Louis, MO 63112  
(314) 863-5536  
Fax (314) 863-6070  
E-Mail: [jkem911@jkem.com](mailto:jkem911@jkem.com)

## Loading the Drivers

Windows 10 often will not automatically load the drivers for your J-KEM product and you will need to load them manually.

First check to see if the drivers are properly loaded. Connect your J-KEM device to the PC by means of a USB cord. Turn on the J-KEM device. Open Device Manager on your PC (with a Windows 10 system, you can right click on the Windows start icon on the lower left of the desktop, then select Device Manager from the start up menu. The appearance of Device Manager will change depending on the specific J-KEM product you are installing driver for, but all devices should look similar to this.

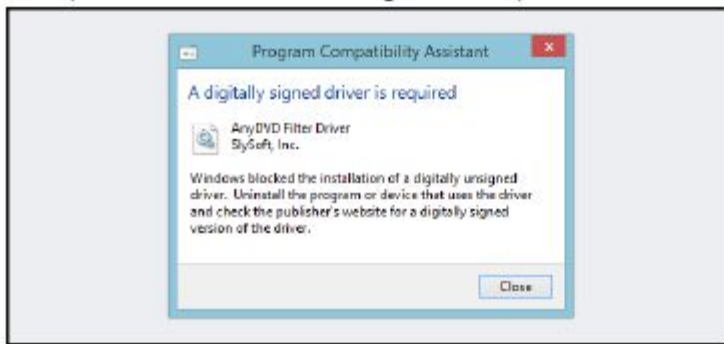
Open the Ports item list by clicking on the white triangle next to Ports. If you do not see any items in here with the titles of “J-KEM”, then the drivers have not been loaded. Or, if you see one of these items, but they have a yellow triangle or a yellow circle with an exclamation mark in it next to the item, then the drivers have not been loaded properly. In either case, contact your computer support group for assistance to properly load the drivers supplied by J-KEM.



If you are using Windows 10, then you will need to disable Driver Signature Enforcement to load J-KEM's drivers.

## Disabling Driver Signature Enforcement

### How to Disable Driver Signature Verification on 64-Bit Windows 8.1 or 10 (So That You Can Install Unsigned Drivers)



64-Bit editions of Windows require digitally signed drivers. The problem is that many devices ship with unsigned drivers. Today, we'll show you how to install them regardless.

Digitally signed drivers include an electronic fingerprint that indicates which company the driver was produced by as well as an indication as to whether the driver has been modified since the company released it. This increases security, as a signed driver that has been modified will no longer have an intact signature. Drivers are signed using code signing certificates.

### How to Disable Driver Signature Verification on 64-Bit Windows 8.1 or 10

To disable driver signature verification, we're going to need to get into the Troubleshooting options from the boot manager. The easiest way to bring this screen up is using a secret trick.

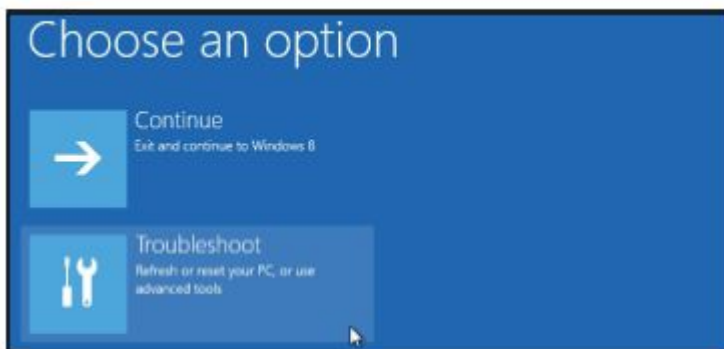
Simply select Restart from the power options menu (on Windows 8 that's under Charms or on the login screen, and in Windows 10 it's on the Start Menu).

Hold down the SHIFT key while you click Restart.

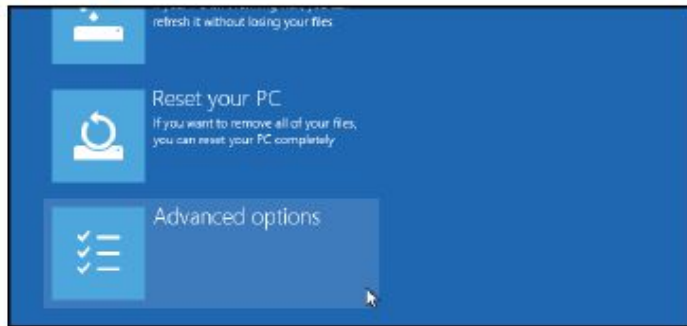


(Again, you can use this trick on any of the power menus in Windows 8 or 10, whether on the login screen, Charms bar, Start Menu, or Start Screen.)

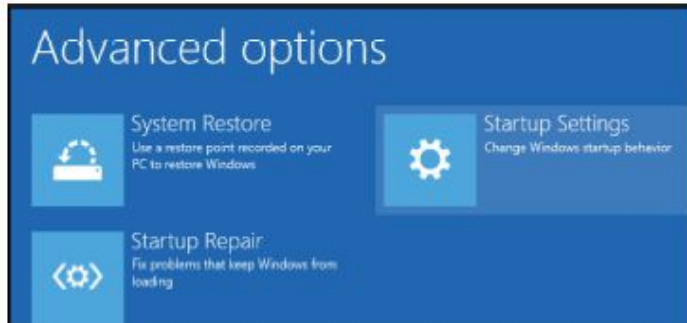
Once your computer has rebooted you will be able to choose the Troubleshoot option.



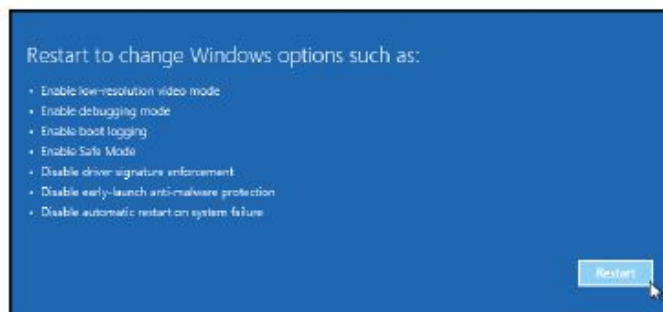
Then head into Advanced options.



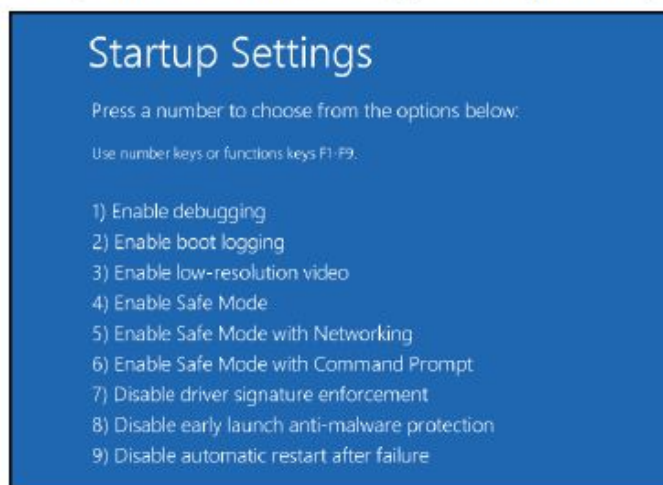
Then Startup Settings.



Since we are modifying boot time configuration settings, you will need to restart your Computer one last time.



Finally, you will be given a list of startup settings that you can change. The one we are looking for is "Disable driver signature enforcement". To choose the setting, you will need to press the F7 key.



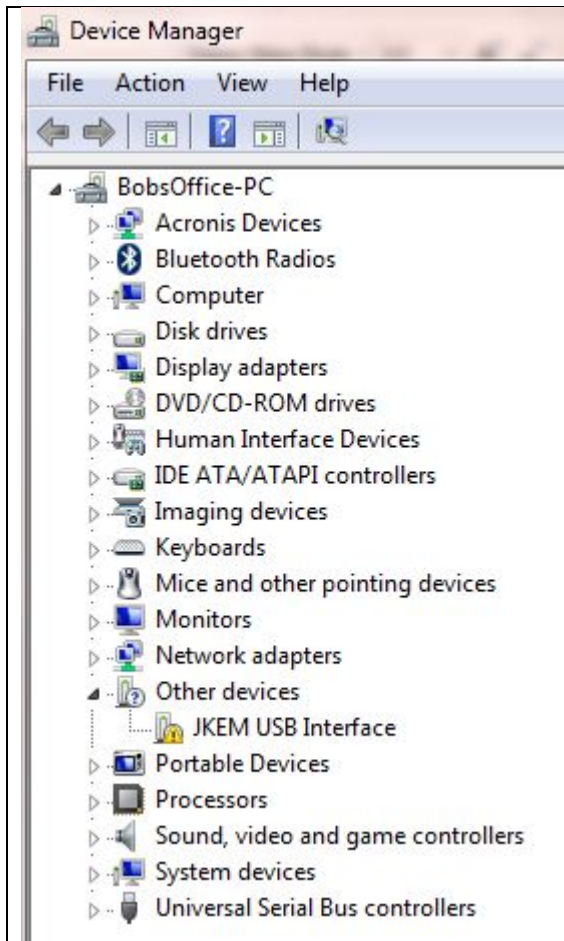
That's all there is to it. Your PC will then reboot and you will be able to install unsigned drivers without any error message 🤔

## Manually Loading J-KEM Drivers


The J-KEM device must be connected to the PC using a USB cable during this step.

1) Open Device Manager in your PC. For Windows 8 and 10 you can right click on the Start icon (lower left of the screen) and then from the pop-up menu select Device Manager.


2)



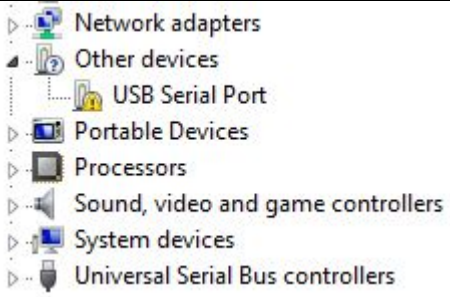
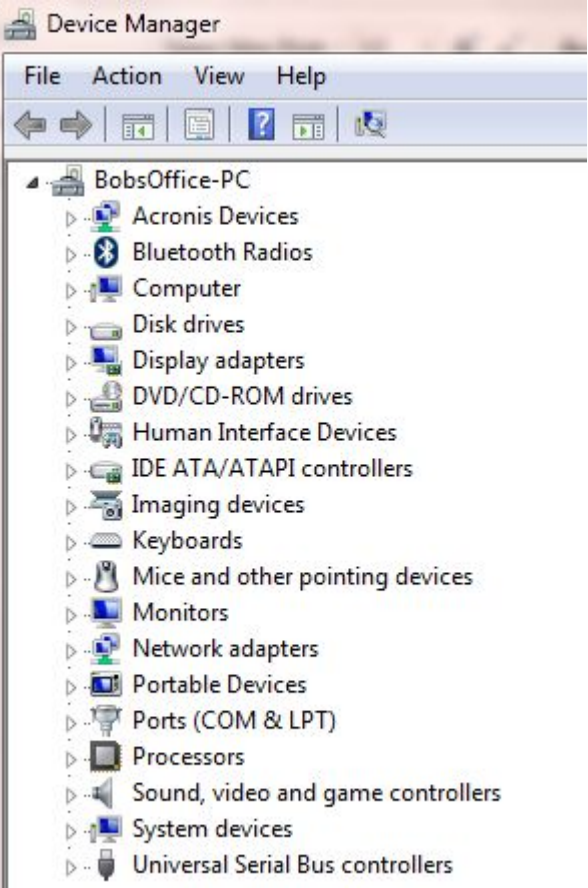
Open Device Manager in your PC. For Windows 8 and 10 you can right click on the Start icon (lower left of the screen) and then from the pop-up menu select Device Manager.

The appearance of the Device manager can change, but somewhere you will see a yellow icon . To verify that this is the icon for the controller, unplug the USB cord and the icon should disappear, the plug it back in and it should reappear..

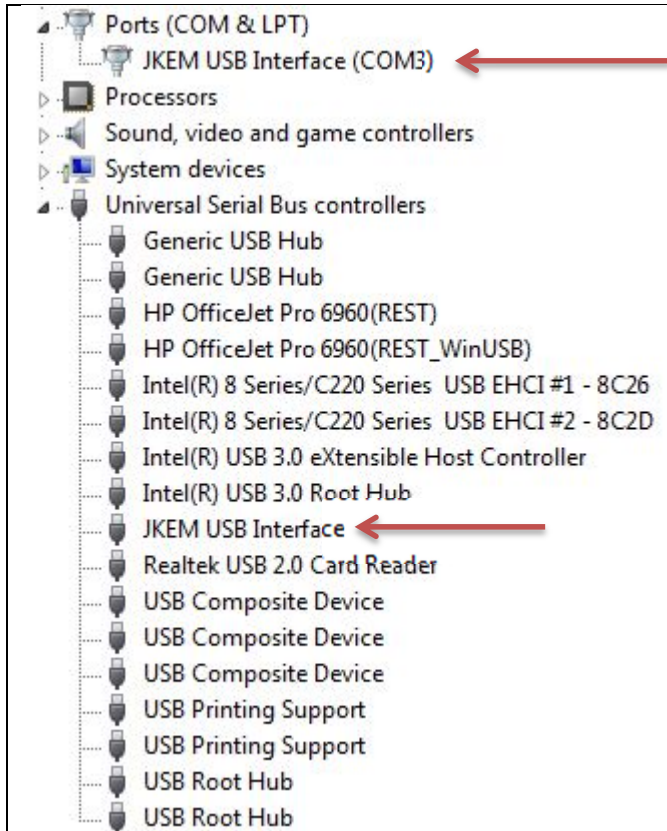
Right click on this icon and select the option to Update Driver Software.

 **Browse my computer for driver software**  
Locate and install driver software manually.

Select Browse my computer for software, then browse to the folder containing the J-KEM Drivers. Do not open the folder, just select it, then click the Next button. Ignore all warning messages and select the option that allows installation to continue.

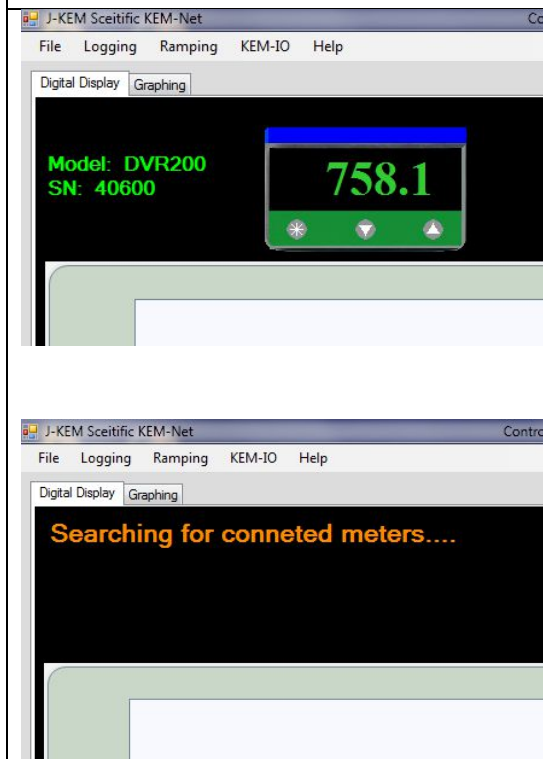
	<p>When the driver is installed. The first yellow icon will disappear, and it will be replaced with a second yellow icon.</p> <p>NOTE: some J-KEM products require the installation of two drivers. The first driver (USB driver) was installed, now repeat the process for this second driver (Serial port driver).</p> <p>The process is the same, which is:</p> <ol style="list-style-type: none"> <li>1) Right click on the yellow icon</li> <li>2) Select Update Driver software</li> <li>3) Browse to the J-KEM software folder and select the folder titled J-KEM Controller Drivers.</li> <li>4) Click Next and accept all options to allow the installation to continue.</li> </ol>
	<p>When you have successfully installed both drivers, the Device Manger will look like this.</p>





If you expand the Ports Icon and the Universal Serial Bus controllers icon, you will see the two icons highlighted. To verify that these drivers have been loaded correctly, unplug the USB cable and they will disappear, then reconnect the USB cable and they will reappear.

Your controller is now ready for use with KEM-Net



Close the Device Manager.  
Now start the software for your J-KEM software.  
If the installation process was successful, then your J-KEM will operate as stated.